



Kielder Terrace, North Shields, North Tyneside

Asking Price £155,000

 2  1  1  C

RICHARDSONS 



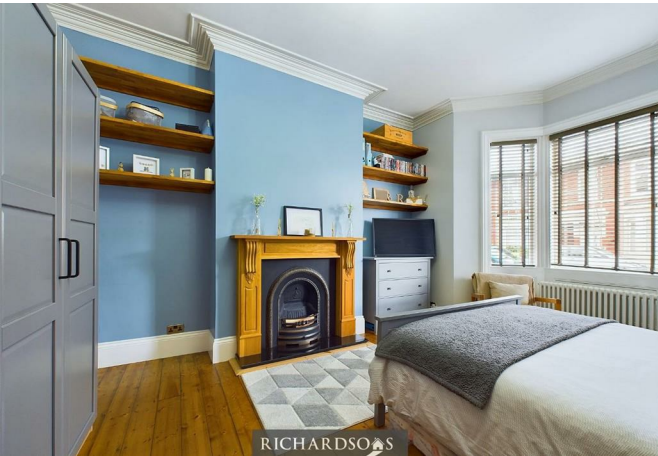
RICHARDSONS



# Kielder Terrace, North Shields, North Tyneside , NE30 2AD

- Ground floor
- Immaculate condition
- Courtyard
- Two bedrooms
- Spacious kitchen
- EPC rating C

Asking Price £155,000

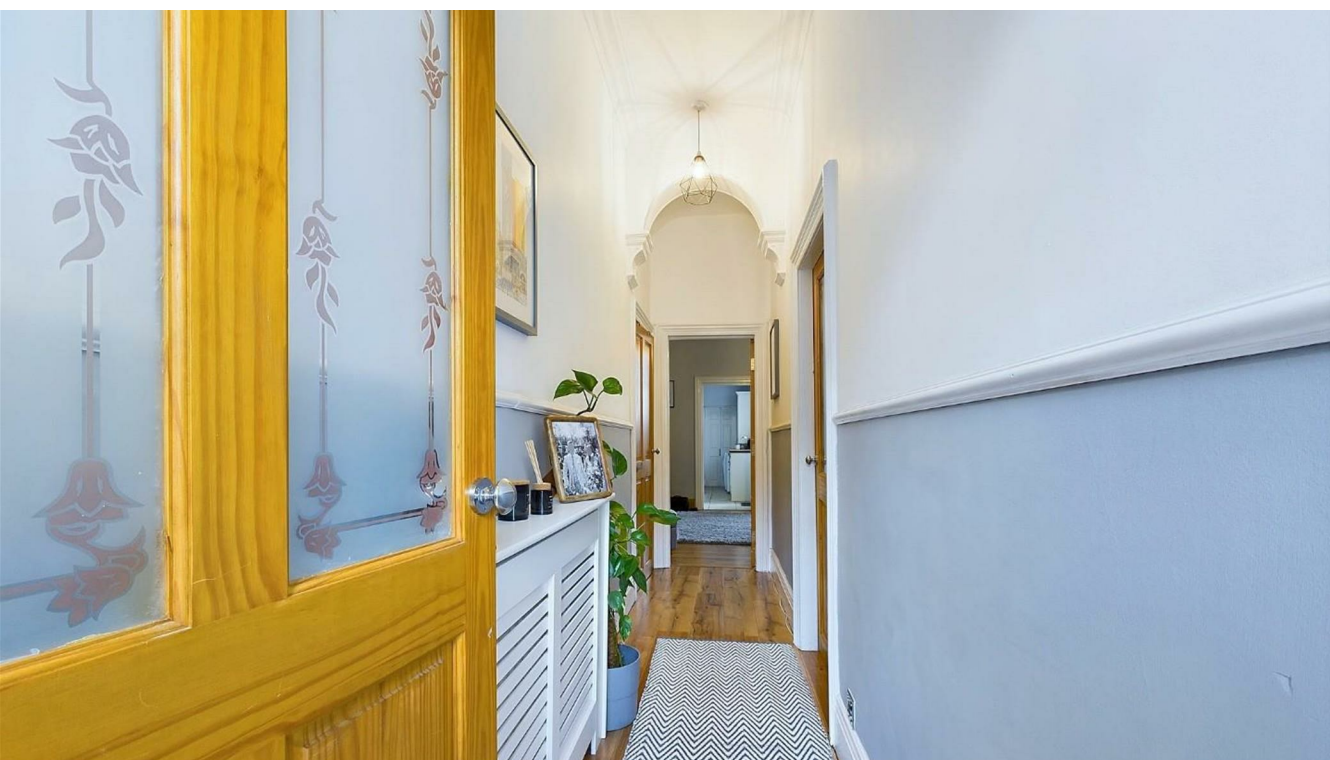


Welcome to this charming ground floor flat in immaculate condition, this delightful property boasts a cosy reception room, two comfortable bedrooms, modern bathroom and a courtyard ideal for alfresco evenings.

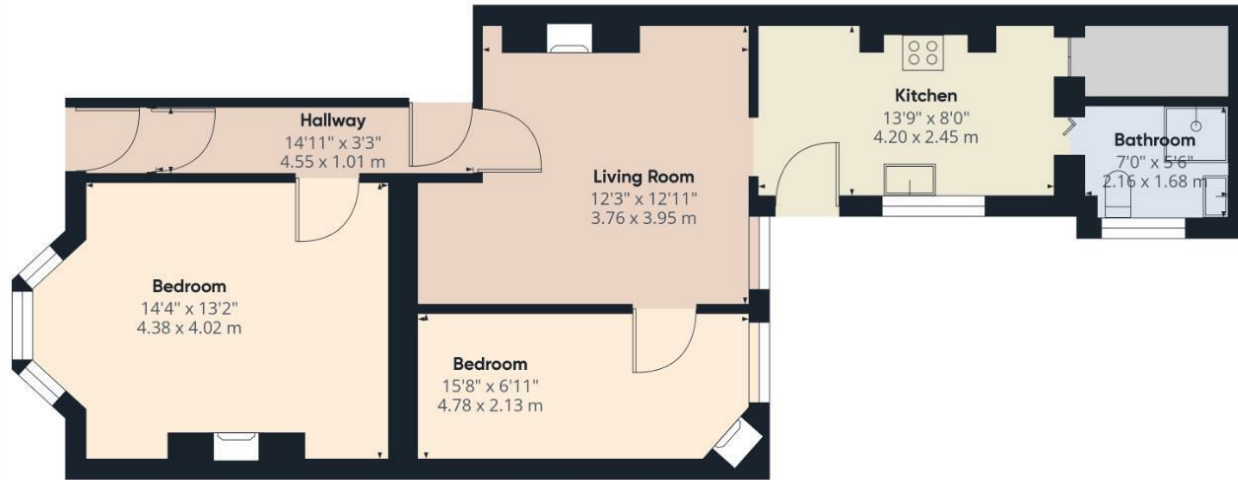
Situated in the vibrant area of North Shields, this property offers easy access to local amenities, schools, and transport links, making it an ideal choice for those seeking a convenient lifestyle.

Don't miss the opportunity to make this lovely flat your new home. Contact us today to arrange a viewing.

Council Tax - A  
Tenure - Leasehold 957 years remaining





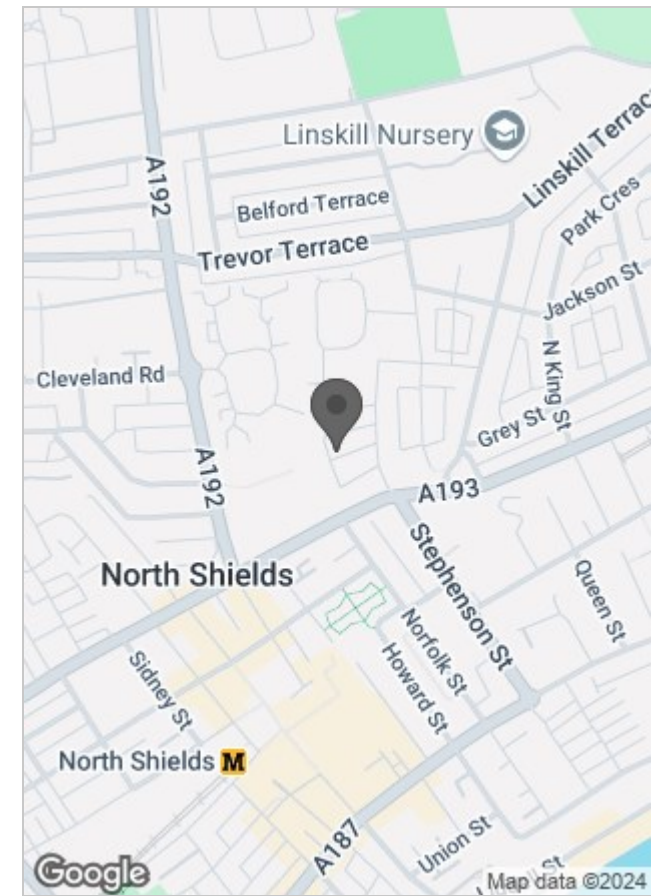


Approximate total area<sup>(1)</sup>  
726.53 ft<sup>2</sup>  
67.5 m<sup>2</sup>

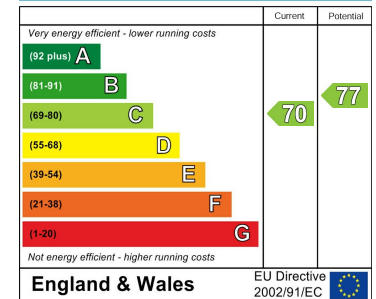
(1) Excluding balconies and terraces

While every attempt has been made to ensure accuracy, all measurements are approximate, not to scale. This floor plan is for illustrative purposes only.

GIRAFFE 360



Energy Efficiency Rating



Viewing

For further information or to arrange a viewing please contact our North Shields office on 01912903770

The particulars are set out as a general outline only for the guidance of intended purchasers or lessees, and do not constitute, any part of a contract. Nothing in these particulars shall be deemed to be a statement that the property is in good structural condition or otherwise nor that any of the services, appliances, equipment or facilities are in good working order. Purchasers should satisfy themselves of this prior to purchasing.